

# INNER PADDOCK REGULATIONS FOR ANNUAL RENTAL 2025

- **INNER PADDOCK BAYS ARE RESERVED ON AN ANNUAL OR WEEKEND BASIS** – if you have reserved a bay(s) on an annual basis then you must communicate to TVKC at the point of entries closing if your bay(s) won't be in use for the meeting. Continued failure to communicate this may result in your reservation being rescinded. If none of your drivers are entered into the meeting, TVKC reserve the right to rent out your bay ahead of that meeting.
- **BAY STANDARDS** – all rubbish must be placed into black bin bags before being placed into bins. Please respect the venue and ensure your area is kept clean and tidy with the bays being left in the same standard as when you arrived. A fine may be imposed, at the discretion of the circuit manager, if your bay is left in an unacceptable standard.
- **PADDOCK PASS SYSTEM** - Access to the Inner Paddock will only be granted to those who have reserved a bay and correctly display their paddock pass in their vehicle. Your vehicle must be parked within your designated bay, TVKC reserve the right to revoke your vehicle pass if you cannot fit your vehicle within your bay. If vehicles are changed, then the pass must be transferred across, and it is the bay holder's responsibility to ensure all vehicles have a pass displayed.
- **TYRES** – please note that it will not be possible to leave tyres on site. All tyres must be taken away with you and a fine may be imposed, at the discretion of the circuit manager, if you are found to be leaving tyres on site.
- **MOTORHOMES & CARAVANS** - if you are bringing a motorhome or caravan and it is **NOT BEING USED TO RUN YOUR KART OUT OF**, i.e. not a working vehicle, it must be parked at the back of the outer paddock (space dependant) or grass area leaving the roadways clear, see image 1 & 2 below. If it is found during the event that a non-working motorhome or caravan is in the inner paddock, TVKC reserves the right to revoke the pass and refund any future bookings. Please note that there is a designated Waste Disposal Point, highlighted on image 1 below, and all motorhome/caravan waste must be disposed of here. Anyone found to be disposing of it elsewhere may face a penalty by the circuit manager.
- **PRIVATE CARS** – all private cars belonging to annual bays **MUST** be parked in the designated car park area, see image 1 below.
- **AWNING FASTENINGS** – drilling and the use of raw bolts is permitted for fastening your awnings in the inner and outer paddocks. Using stakes is not permitted and TVKC reserve the right to request payment for any repair work required. If any eyelets around your bay require replacing then please let TVKC know.
- **GROUND SHEETS** – To protect the paddock tarmac, ground sheets are mandatory in all awnings/E-Z up's. Any karts not in an awning, i.e. side of a van, must have a minimum of a floor mat that fits underneath the working area. This also applies to the rear paddock.
- **BAY SIZE** – each main bay is 8m x 6m. There are 5 smaller bays G1-G2, G4-G6 by the entrance that measure 8m x 5m. It is your responsibility to make sure that your vehicle fits inside the bay and does not overhang into the roadways, which must be kept clear for emergency vehicles. You may be asked to move your vehicle if it does not fit.
- **PAYMENT** - each main bay is £475 for the year and £75 for a weekend hire. The G bays are £375 for the year and £50 for a weekend hire. You will be invoiced for your bays and payment must be made in accordance with the date on the invoice. If payment is not received by the due date then your reservation may be cancelled.
- **WHAT'S INCLUDED** – there are multi-point electric plug-in points which are accessible from all bays. Power is supplied between the hours of 7am -11pm. The bay is rented for the 11 club meetings (Saturday and Sunday) and Kartmasters Grand Prix (Wednesday to Friday). It does not include any visiting Championships.
- **NON-TRANSFERABLE** - Pit spaces are **NOT TRANSFERABLE** and **MUST NOT** be sub-rented, even for no payment, to another party. If you do not require the bay(s) for one or more meetings please inform us on [compsec@tvkc.co.uk](mailto:compsec@tvkc.co.uk). During the meeting the club reserves the right to allocate your space to another party if you do not arrive.
- **PADDOCK OFFICER** – a Paddock Officer will be monitoring the parking within the inner and outer paddocks and may require you to move your vehicle if it's blocking roadways or access. Please respect their requests and adhere to these regulations along with any other parking requests they may ask for.

Image 1

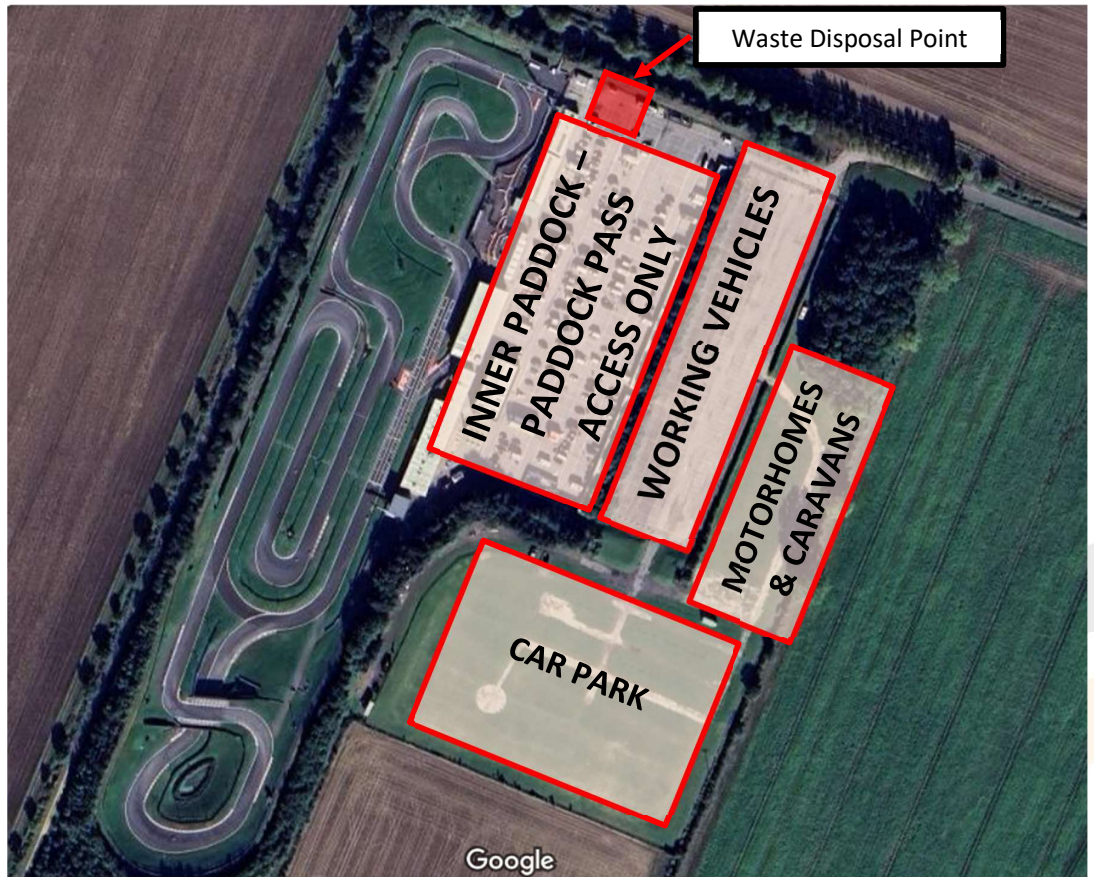


Image 2

